

SFY 2009-SFY2010 Q1Q2 OAMH Monthly Crisis Report Drill-Down

ED Face to Face>25%

Hospitalizations>25%

Hospitalizations 20-25%

July 2008 SFY2009 Monthly Crisis Report Utilization Analysis *

Agency *	FaceContacts	EDAdmits	VolPsyHsp	InVolPsyHosp	TotPsyHosp	CSUAdmits	ED Admits/ Face Contacts	Vol Hspitzn/ Face Contacts	Invol Hspitzn/ Face Contacts	Total Hspitzn/ Face Contacts	CSU Admits/ Face Contacts
Crisis&Cnsng	348	173	87	24	111	49	50%	25%	7%	32%	14%
CSI	251	177	38	24	62	43	71%	15%	10%	25%	17%
TCMH	178	159	55	24	79	13	89%	31%	13%	44%	7%
Ingraham	162	4	4	8	12	36	2%	2%	5%	7%	22%
Sweetser	112	59	30	5	35	9	53%	27%	4%	31%	8%
CHCS	108	48	21	0	21	27	44%	19%	0%	19%	25%
AMHC	101	69	15	4	19	11	68%	15%	4%	19%	11%
MCMH	97	74	42	6	48	2	76%	43%	6%	49%	2%
WCPA	85	52	18	3	21	0	61%	21%	4%	25%	0%
OCMH	84	49	15	2	17	11	58%	18%	2%	20%	13%
Evergreen	36	27	11	2	13	0	75%	31%	6%	36%	0%
TOTAL	1562	891	336	102	438	201	57%	22%	7%	28%	23%
Group Average											
1st Quartile	91	48.5	15	2.5	18	5.5	51%	16%	4%	20%	5%
Median	108	59	21	5	21	11	61%	21%	5%	25%	11%
3rd Quartile	170	116.5	40	16	55	31.5	73%	29%	7%	34%	16%
Created by R. Jerrold Melville, State of Maine DHHS OQI											
* Sorted by volume of face to face contacts											

August 2008 SFY2009 Monthly Crisis Report Utilization Analysis *											
Agency *	FaceContacts	EDAdmits	VolPsvHsp	InVolPsvHosp	TotPsvHosp	CSUAdmits	ED Admits/ Face Contacts	Vol Hsptlzn/ Face Contacts	Invol Hsptlzn/ Face Contacts	Total Hsptlzn/ Face Contacts	CSU Admits/ Face Contacts
Crisis&Cnsing	368	174	83	22	105	49	47%	23%	6%	29%	13%
CSI	249	161	49	14	63	37	65%	20%	6%	25%	15%
TCMH	203	163	72	18	90	19	80%	35%	9%	44%	9%
Ingraham	169	8	15	0	15	42	5%	9%	0%	9%	25%
CHCS	152	89	23	4	27	34	59%	15%	3%	18%	22%
MCMH	114	83	41	9	50	7	73%	36%	8%	44%	6%
Sweetser	107	74	37	5	42	10	69%	35%	5%	39%	9%
AMHC	103	56	22	5	27	10	54%	21%	5%	26%	10%
WCPA	90	46	17	3	20	5	51%	19%	3%	22%	6%
OCMH	63	39	12	3	15	12	62%	19%	5%	24%	19%
Evergreen	58	43	16	6	22	2	74%	28%	10%	38%	3%
TOTAL	1676	936	387	89	476	227	56%	23%	5%	28%	24%
Group Average											
1st Quartile	96.5	44.5	16.5	3.5	21	8.5	53%	19%	4%	23%	8%
Median	114	74	23	5	27	12	62%	21%	5%	26%	10%
3rd Quartile	186	125	45	11.5	56.5	35.5	71%	31%	7%	39%	17%
Created by R. Jerrold Melville, State of Maine DHHS OQI											
* Sorted by volume of face to face contacts											

September 2008 SFY2009 Monthly Crisis Report Utilization Analysis *											
Agency *	FaceContacts	EDAdmits	VolPsyHsp	InVolPsyHosp	TotPsyHosp	CSUAdmits	ED Admits/ Face Contacts	Vol Hspitzn/ Face Contacts	Invol Hspitzn/ Face Contacts	Total Hspitzn/ Face Contacts	CSU Admits/ Face Contacts
Crisis&Cnsing	351	162	77	18	95	71	46%	22%	5%	27%	20%
CSI	251	158	43	22	65	34	63%	17%	9%	26%	14%
Ingraham	159	3	11	2	13	41	2%	7%	1%	8%	26%
TCMH	155	127	44	15	59	18	82%	28%	10%	38%	12%
Sweetser	124	79	40	7	47	8	64%	32%	6%	38%	6%
CHCS	114	56	17	3	20	28	49%	15%	3%	18%	25%
MCMH	110	84	54	6	60	5	76%	49%	5%	55%	5%
AMHC	81	40	10	7	17	5	49%	12%	9%	21%	6%
WCPA	74	42	16	4	20	1	57%	22%	5%	27%	1%
OCMH	52	33	8	0	8	12	63%	15%	0%	15%	23%
Evergreen	51	35	8	1	9	5	69%	16%	2%	18%	10%
TOTAL	1522	819	328	85	413	228	54%	22%	6%	27%	28%
Group Average											
1st Quartile	77.5	37.5	10.5	2.5	15	5	49%	15%	2%	18%	6%
Median	114	56	17	6	20	12	63%	17%	5%	26%	12%
3rd Quartile	157	105.5	43.5	11	59.5	31	66%	25%	7%	32%	22%
Created by R. Jerrold Melville, State of Maine DHHS OQI											
* Sorted by volume of face to face contacts											

October 2008 SFY 2009 Monthly Crisis Report Utilization Analysis *											
Agency *	FaceContacts	EDAdmits	VolPsyHsp	InVolPsyHosp	TotPsyHosp	CSUAdmits	ED Admits/ Face Contacts	Vol Hspitzn/ Face Contacts	Invol Hspitzn/ Face Contacts	Total Hspitzn/ Face Contacts	CSU Admits/ Face Contacts
Crisis&Cnsing	341	179	72	14	86	56	52%	21%	4%	25%	16%
CSI	251	182	52	18	70	35	73%	21%	7%	28%	14%
Ingraham	175	7	7	0	7	42	4%	4%	0%	4%	24%
TCMH	146	109	50	9	59	18	75%	34%	6%	40%	12%
MCMH	118	87	44	12	56	5	74%	37%	10%	47%	4%
CHCS	113	55	12	1	13	25	49%	11%	1%	12%	22%
AMHC	104	60	18	7	25	14	58%	17%	7%	24%	13%
Sweetser	88	61	29	8	37	7	69%	33%	9%	42%	8%
OCMH	67	46	8	4	12	14	69%	12%	6%	18%	21%
WCPA	67	43	9	2	11	5	64%	13%	3%	16%	7%
Evergreen	34	22	6	2	8	1	65%	18%	6%	24%	3%
TOTAL	1504	851	307	77	384	222	57%	20%	5%	26%	26%
Group Average											
1st Quartile	77.5	44.5	8.5	2	11.5	6	55%	13%	4%	17%	8%
Median	113	60	18	7	25	14	65%	18%	6%	24%	13%
3rd Quartile	160.5	98	47	10.5	57.5	30	71%	27%	7%	34%	19%
Created by R. Jerrold Melville, State of Maine DHHS OQI											
* Sorted by volume of face to face contacts											

November 2008 SFY2009 Monthly Crisis Report Utilization Analysis *											
Agency *	FaceContacts	EDAdmits	VolPsyHsp	InVolPsyHosp	TotPsyHosp	CSUAdmits	ED Admits/ Face Contacts	Vol Hsptlztn/ Face Contacts	Invol Hsptlztn/ Face Contacts	Total Hsptlztn/ Face Contacts	CSU Admits/ Face Contacts
Crisis&Cnsing	347	175	68	12	80	62	50%	20%	3%	23%	18%
CSI	185	120	36	16	52	26	65%	19%	9%	28%	14%
Ingraham	176	11	15	0	15	25	6%	9%	0%	9%	14%
TCMH	160	132	49	6	55	14	83%	31%	4%	34%	9%
MCMH	133	95	59	5	64	5	71%	44%	4%	48%	4%
Sweetser	100	72	34	10	44	8	72%	34%	10%	44%	8%
AMHC	98	48	16	6	22	16	49%	16%	6%	22%	16%
CHCS	95	55	15	1	16	28	58%	16%	1%	17%	29%
WCPA	56	36	12	2	14	3	64%	21%	4%	25%	5%
Evergreen	54	39	4	2	6	3	72%	7%	4%	11%	6%
OCMH	40	26	3	3	6	14	65%	8%	8%	15%	35%
TOTAL	1444	809	311	63	374	204	56%	22%	4%	26%	25%
Group Average											
1st Quartile	75.5	37.5	13.5	2	14.5	6.5	54%	12%	4%	16%	7%
Median	100	55	16	5	22	14	65%	19%	4%	23%	14%
3rd Quartile	168	107.5	42.5	8	53.5	25.5	72%	26%	7%	31%	17%
Created by R. Jerrold Melville, State of Maine DHHS OQI											
* Sorted by volume of face to face contacts											

December 2008 SFY2009 Monthly Crisis Report Utilization Analysis *											
Agency *	FaceContacts	EDAdmits	VolPsyHsp	InVolPsyHosp	TotPsyHosp	CSUAdmits	ED Admits/ Face Contacts	Vol Hspitzn/ Face Contacts	Invol Hspitzn/ Face Contacts	Total Hspitzn/ Face Contacts	CSU Admits/ Face Contacts
Crisis&Cnsing	303	151	77	11	88	53	50%	25%	4%	29%	17%
CSI	230	158	62	18	80	30	69%	27%	8%	35%	13%
Ingraham	171	12	12	2	14	39	7%	7%	1%	8%	23%
TCMH	150	113	47	12	59	25	75%	31%	8%	39%	17%
MCMH	110	79	47	8	55	1	72%	43%	7%	50%	1%
CHCS	101	57	10	1	11	32	56%	10%	1%	11%	32%
Sweetser	99	75	40	7	47	12	76%	40%	7%	47%	12%
AMHC	89	51	22	7	29	4	57%	25%	8%	33%	4%
WCPA	56	40	11	1	12	5	71%	20%	2%	21%	9%
OCMH	54	30	5	4	9	13	56%	9%	7%	17%	24%
Evergreen	50	24	8	2	10	2	48%	16%	4%	20%	4%
TOTAL	1413	790	341	73	414	216	56%	24%	5%	29%	27%
Group Average											
1st Quartile	72.5	35	10.5	2	11.5	4.5	53%	13%	3%	18%	7%
Median	101	57	22	7	29	13	57%	25%	7%	29%	13%
3rd Quartile	160.5	96	47	9.5	57	31	72%	29%	8%	37%	20%
Created by R. Jerrold Melville, State of Maine DHHS OQI											
* Sorted by volume of face to face contacts											

January 2009 Monthly Crisis Report Utilization Analysis *											
Agency *	FaceContacts	EDAdmits	VolPsyHsp	InVolPsyHosp	TotPsyHosp	CSUAdmits	ED Admits/ Face Contacts	Vol Hsptlztn/ Face Contacts	Invol Hsptlztn/ Face Contacts	Total Hsptlztn/ Face Contacts	CSU Admits/ Face Contacts
Crisis&Cnsing	363	183	97	17	114	60	50%	27%	5%	31%	17%
CSI	291	198	59	31	90	36	68%	20%	11%	31%	12%
TCMH	175	127	58	4	62	26	73%	33%	2%	35%	15%
Ingraham	143	8	8	2	10	41	6%	6%	1%	7%	29%
MCMH	127	86	48	7	55	5	68%	38%	6%	43%	4%
CHCS	102	57	12	3	15	21	56%	12%	3%	15%	21%
Sweetser	96	70	39	9	48	14	73%	41%	9%	50%	15%
AMHC	90	46	16	5	21	14	51%	18%	6%	23%	16%
OCMH	82	61	18	3	21	17	74%	22%	4%	26%	21%
WCPA	63	32	10	2	12	5	51%	16%	3%	19%	8%
Evergreen	56	33	11	2	13	2	59%	20%	4%	23%	4%
TOTAL	1588	901	376	85	461	241	57%	24%	5%	29%	27%
Group Average											
1st Quartile	86	39.5	11.5	2.5	14	9.5	51%	17%	3%	21%	10%
Median	102	61	18	4	21	17	59%	20%	4%	26%	15%
3rd Quartile	159	106.5	53	8	58.5	31	70%	30%	6%	33%	19%
Created by R. Jerrold Melville, State of Maine DHHS OQI											
* Sorted by volume of face to face contacts											

February 2009 Monthly Crisis Report Utilization Analysis *											
Agency *	FaceContacts	EDAdmits	VolPsyHsp	InVolPsyHosp	TotPsyHosp	CSUAdmits	ED Admits/ Face Contacts	Vol Hsptlztn/ Face Contacts	Invol Hsptlztn/ Face Contacts	Total Hsptlztn/ Face Contacts	CSU Admits/ Face Contacts
Crisis&Cnsing	328	183	78	12	90	58	56%	24%	4%	27%	18%
CSI	209	134	35	12	47	30	64%	17%	6%	22%	14%
TCMH	171	129	66	15	81	22	75%	39%	9%	47%	13%
Ingraham	109	7	13	3	16	33	6%	12%	3%	15%	30%
MCMH	107	74	45	2	47	8	69%	42%	2%	44%	7%
CHCS	106	57	16	0	16	23	54%	15%	0%	15%	22%
Sweetser	83	62	26	6	32	13	75%	31%	7%	39%	16%
AMHC	75	37	8	1	9	13	49%	11%	1%	12%	17%
WCPA	57	36	9	2	11	2	63%	16%	4%	19%	4%
Evergreen	45	23	11	0	11	5	51%	24%	0%	24%	11%
OCMH	43	31	8	1	9	8	72%	19%	2%	21%	19%
TOTAL	1333	773	315	54	369	215	58%	24%	4%	28%	28%
Group Average											
1st Quartile	66	33.5	10	1	11	8	52%	15%	2%	17%	12%
Median	106	57	16	2	16	13	63%	19%	3%	22%	16%
3rd Quartile	140	101.5	40	9	47	26.5	71%	28%	5%	33%	18%
Created by R. Jerrold Melville, State of Maine DHHS OQI											
* Sorted by volume of face to face contacts											

March 2009 Monthly Crisis Report Utilization Analysis *											
Agency *	FaceContacts	EDAdmits	VolPsyHsp	InVolPsyHosp	TotPsyHosp	CSUAdmits	ED Admits/ Face Contacts	Vol Hsptlzn/ Face Contacts	Invol Hsptlzn/ Face Contacts	Total Hsptlzn/ Face Contacts	CSU Admits/ Face Contacts
Crisis&Cnsng	333	177	76	15	91	58	53%	23%	5%	27%	17%
CSI	254	164	50	16	66	30	65%	20%	6%	26%	12%
TCMH	169	127	59	11	70	21	75%	35%	7%	41%	12%
MCMH	132	94	53	8	61	9	71%	40%	6%	46%	7%
Ingraham	129	11	9	0	9	40	9%	7%	0%	7%	31%
Sweetser	117	82	31	5	36	15	70%	26%	4%	31%	13%
CHCS	102	49	8	2	10	29	48%	8%	2%	10%	28%
WCPA	84	54	16	6	22	5	64%	19%	7%	26%	6%
AMHC	82	42	15	4	19	14	51%	18%	5%	23%	17%
Evergreen	60	36	15	1	16	2	60%	25%	2%	27%	3%
OCMH	47	34	6	2	8	10	72%	13%	4%	17%	21%
TOTAL	1509	870	338	70	408	233	58%	22%	5%	27%	27%
Group Average											
1st Quartile	83	39	12	2	13	9.5	52%	16%	3%	20%	9%
Median	117	54	16	5	22	15	64%	20%	5%	26%	13%
3rd Quartile	150.5	110.5	51.5	9.5	63.5	29.5	71%	28%	6%	29%	19%
Created by R. Jerrold Melville, State of Maine DHHS OQI											
* Sorted by volume of face to face contacts											

April 2009 Monthly Crisis Report Utilization Analysis *											
Agency *	FaceContacts	EDAdmits	VolPsvHsp	InVolSpvHosp	TotPsvHosp	CSUAdmits	ED Admits/ Face Contacts	Vol Hspitzn/ Face Contacts	Invol Hspitzn/ Face Contacts	otal Psy Hspitzn/ Face Contacts	CSUAdmits/ Face Contacts
Crisis&Cnslng	336	181	76	9	85	65	54%	23%	3%	25%	19%
CSI	253	168	60	25	85	36	66%	24%	10%	34%	14%
Ingraham	172	2	10	0	10	46	1%	6%	0%	6%	27%
TCMH	155	111	53	9	62	19	72%	34%	6%	40%	12%
MCMH	116	78	57	4	61	8	67%	49%	3%	53%	7%
CHCS	115	56	14	0	14	23	49%	12%	0%	12%	20%
Sweetser	109	86	29	8	37	10	79%	27%	7%	34%	9%
AMHC	89	53	14	5	19	10	60%	16%	6%	21%	11%
WCPA	86	50	20	3	23	4	58%	23%	3%	27%	5%
OCMH	47	38	10	6	16	6	81%	21%	13%	34%	13%
Evergreen	45	29	9	4	12	3	64%	20%	9%	27%	7%
TOTAL	1523	852	352	73	424	230	56%	23%	5%	28%	27%
Group Average											
1st Quartile	87.5	44	12	3.5	15	7	56%	18%	3%	23%	8%
Median	115	56	20	5	23	10	64%	23%	6%	27%	12%
3rd Quartile	163.5	98.5	55	8.5	61.5	29.5	69%	25%	8%	34%	17%
Created by R. Jerrold Metville, State of Maine DHHS UJA											
* Sorted by volume of face to face contacts											

May 2009 Monthly Crisis Report Utilization Analysis *											
Agency *	FaceContacts	EDAdmits	VolPsyHsp	InVolSpvHosp	TotPsyHosp	CSUAdmits	ED Admits/ Face Contacts	Vol Hsptlztn/ Face Contacts	Invol Hsptlztn/ Face Contacts	Total Psy Hsptlztn/ Face Contacts	CSU Admits/ Face Contacts
Crisis&Cnsing	332	182	52	15	67	61	55%	16%	5%	20%	18%
CSI	261	184	53	20	73	31	70%	20%	8%	28%	12%
TCMH	185	142	73	12	85	22	77%	39%	6%	46%	12%
Ingraham	164	7	17	3	20	40	4%	10%	2%	12%	24%
MCMH	124	87	55	10	65	11	70%	44%	8%	52%	9%
Sweetser	102	82	40	4	44	12	80%	39%	4%	43%	12%
AMHC	98	59	20	4	24	5	60%	20%	4%	24%	5%
CHCS	89	49	17	2	19	23	55%	19%	2%	21%	26%
WCPA	86	51	16	2	18	0	59%	19%	2%	21%	0%
Evergreen	53	28	8	1	9	3	53%	15%	2%	17%	6%
OCMH	51	26	6	3	9	11	51%	12%	6%	18%	22%
TOTAL	1545	897	357	76	433	219	58%	23%	5%	28%	14%
Group Average											
1st Quartile	87.5	38.5	16.5	2.5	18.5	8	54%	15%	2%	19%	7%
Median	102	59	20	4	24	12	59%	19%	4%	21%	12%
3rd Quartile	174.5	114.5	52.5	11	66	27	70%	30%	6%	36%	20%
Created by R. Jerrold Melville, State of Maine DHHS OQI											
* Sorted by volume of face to face contacts											

June 2009 Monthly Crisis Report Utilization Analysis *											
Agency *	FaceContacts	EDAdmits	VolPsvHsp	InVolPsvHosp	TotPsvHosp	CSUAdmits	ED Admits/ Face Contacts	Vol Hsptlztzn/ Face Contacts	Invol Hsptlztzn/ Face Contacts	Total Hsptlztzn/ Face Contacts	CSU Admits/ Face Contacts
Crisis&Cnsing	345	193	65	12	77	66	56%	19%	3%	22%	19%
CSI	288	211	72	35	107	34	73%	25%	12%	37%	12%
Ingraham	161	9	16	1	17	38	6%	10%	1%	11%	24%
TCMH	146	110	48	11	59	14	75%	33%	8%	40%	10%
MCMH	125	85	46	8	54	7	68%	37%	6%	43%	6%
CHCS	116	58	10	1	11	34	50%	9%	1%	9%	29%
Sweetser	110	86	36	1	37	12	78%	33%	1%	34%	11%
AMHC	95	54	26	5	31	8	57%	27%	5%	33%	8%
WCPA	75	41	16	3	19	2	55%	21%	4%	25%	3%
OCMH	41	32	9	3	12	7	78%	22%	7%	29%	17%
Evergreen	40	16	10	0	10	2	40%	25%	0%	25%	5%
TOTAL	1542	895	354	80	434	224	58%	23%	5%	28%	25%
Group Average											
1st Quartile	85	36.5	13	1	14.5	7	52%	20%	1%	24%	7%
Median	116	58	26	3	31	12	57%	25%	4%	29%	11%
3rd Quartile	153.5	98	47	9.5	56.5	34	74%	30%	7%	35%	18%
Created by R. Jerrold Melville, State of Maine DHHS OQI											
* Sorted by volume of face to face contacts											

SFY 2010	SFY 2010	SFY 2010	SFY 2010	SFY 2010	SFY 2010	SFY 2010	SFY 2010	SFY 2010	SFY 2010	SFY 2010	SFY 2010	SFY 2010
July 2009 Monthly Crisis Report Utilization Analysis *												
Agency *	FaceContacts	EDAdmits	VolPsyHsp	InVolPsyHosp	TotPsyHosp	CSUAdmits	ED Admits/ Face Contacts	Vol Hspltztn/ Face Contacts	Invol Hspltztn/ Face Contacts	Total Hspltztn/ Face Contacts	CSU Admits/ Face Contacts	
Aroostook	120	52	25	3	28	8	43%	21%	3%	23%	7%	
Atlantic (WCPA)	68	32	10	1	11	4	47%	15%	1%	16%	6%	
CHCS	117	60	18	1	19	22	51%	15%	1%	16%	19%	
Crisis&Cnsng	373	211	43	10	53	73	57%	12%	3%	14%	20%	
CSI	268	175	54	20	74	36	65%	20%	7%	28%	13%	
Evergreen	56	26	10	1	11	1	46%	18%	2%	20%	2%	
MCMH	159	116	50	15	65	14	73%	31%	9%	41%	9%	
OCMH	71	41	9	4	13	10	58%	13%	6%	18%	14%	
Sweetser	109	85	32	15	47	16	78%	29%	14%	43%	15%	
TCMH	164	123	48	9	57	20	75%	29%	5%	35%	12%	
YI	145	7	6	2	8	37	5%	4%	1%	6%	26%	
TOTAL	1650	928	305	81	386	241	56%	18%	5%	23%	26%	
Group Average												
1st Quartile	90	36.5	10	1.5	12	9	47%	14%	2%	16%	8%	
Median	120	60	25	4	28	16	57%	18%	3%	20%	13%	
3rd Quartile	161.5	119.5	45.5	12.5	55	29	69%	25%	7%	31%	17%	
Created by R. Jerrold Melville, State of Maine DHHS OQI												
* Sorted by volume of face to face contacts												

August 2009 Monthly Crisis Report Utilization Analysis *											
Agency *	FaceContacts	EDAdmits	VolPsyHsp	InVolPsyHosp	TotPsyHosp	CSUAdmits	ED Admits/ Face Contacts	Vol Hsptlztn/ Face Contacts	Invol Hsptlztn/ Face Contacts	Total Hsptlztn/ Face Contacts	CSU Admits/ Face Contacts
Aroostook	128	70	16	2	18	8	55%	13%	2%	14%	6%
Atlantic (WCPA)	74	48	15	2	17	6	65%	20%	3%	23%	8%
CHCS	111	72	14	1	15	21	65%	13%	1%	14%	19%
Crisis&Cnsing	321	170	50	7	57	66	53%	16%	2%	18%	21%
CSI	339	237	81	20	101	50	70%	24%	6%	30%	15%
Evergreen	44	25	11	0	11	6	57%	25%	0%	25%	14%
MCMH	123	93	52	4	56	10	76%	42%	3%	46%	8%
OCMH	46	31	7	2	9	11	67%	15%	4%	20%	24%
Sweetser	99	84	35	5	40	10	85%	35%	5%	40%	10%
TCMH	170	126	49	15	64	27	74%	29%	9%	38%	16%
YI	159	10	8	1	9	37	6%	5%	1%	6%	23%
TOTAL	1614	966	338	59	397	252	60%	21%	4%	25%	26%
Group Average											
1st Quartile	86.5	39.5	12.5	1.5	13	9	56%	14%	1%	16%	9%
Median	123	72	16	2	18	11	65%	20%	3%	23%	15%
3rd Quartile	164.5	109.5	49.5	6	56.5	32	72%	27%	5%	34%	20%
Created by R. Jerrold Melville, State of Maine DHHS OQI											

September 2009 Monthly Crisis Report Utilization Analysis *											
Agency *	FaceContacts	EDAdmits	VolPsyHsp	InVolPsyHosp	TotPsyHosp	CSUAdmits	ED Admits/ Face Contacts	Vol Hsptlztn/ Face Contacts	Invol Hsptlztn/ Face Contacts	Total Hsptlztn/ Face Contacts	CSU Admits/ Face Contacts
Aroostook	81	40	10	7	17	5	49%	12%	9%	21%	6%
Atlantic (WCPA)	74	42	16	4	20	1	57%	22%	5%	27%	1%
CHCS	114	56	17	3	20	28	49%	15%	3%	18%	25%
Crisis&Cnsing	351	162	77	18	95	71	46%	22%	5%	27%	20%
CSI	251	158	43	22	65	34	63%	17%	9%	26%	14%
Evergreen	51	35	8	1	9	5	69%	16%	2%	18%	10%
MCMH	110	84	54	6	60	5	76%	49%	5%	55%	5%
OCMH	52	33	8	0	8	12	63%	15%	0%	15%	23%
Sweetser	124	79	40	7	47	8	64%	32%	6%	38%	6%
TCMH	155	127	44	15	59	18	82%	28%	10%	38%	12%
YI	159	3	11	2	13	41	2%	7%	1%	8%	26%
TOTAL	1522	819	328	85	413	228	54%	22%	6%	27%	28%
Group Average											
1st Quartile	77.5	37.5	10.5	2.5	15	5	49%	15%	2%	18%	6%
Median	114	56	17	6	20	12	63%	17%	5%	26%	12%
3rd Quartile	157	105.5	43.5	11	59.5	31	66%	25%	7%	32%	22%
Created by R. Jerrold Melville, State of Maine DHHS OQI											

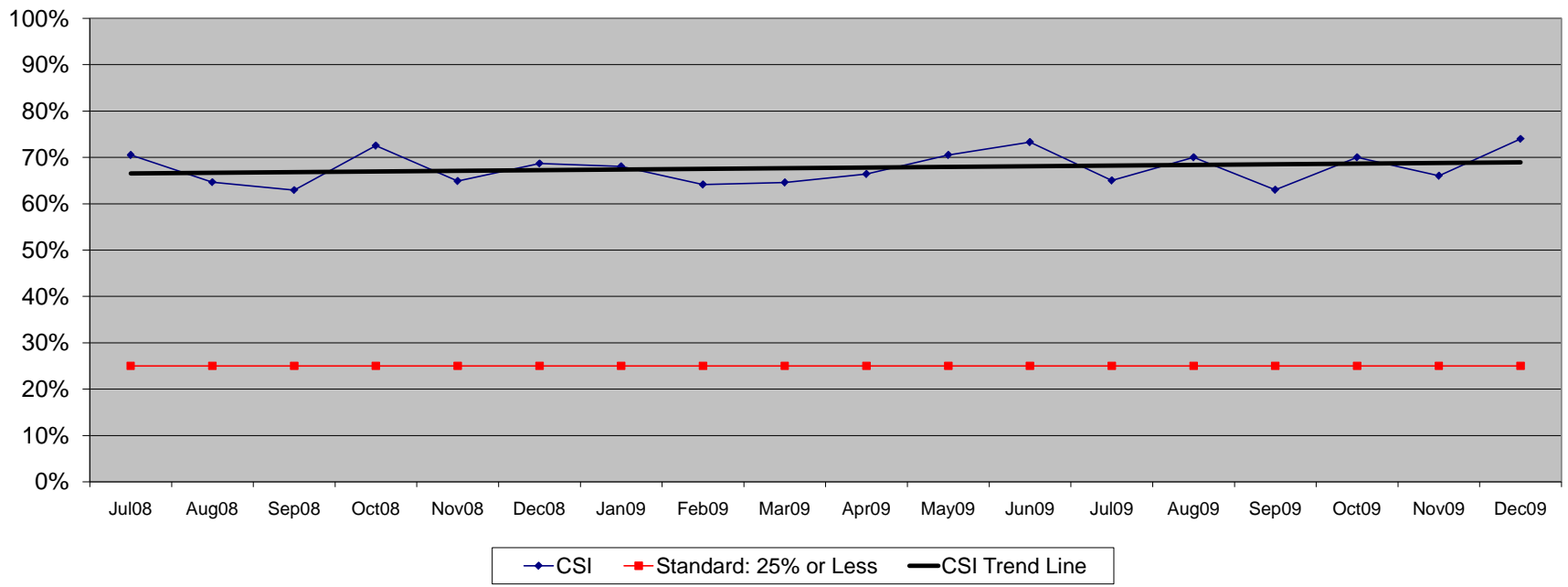
October 2009 Monthly Crisis Report Utilization Analysis *											
Agency *	FaceContacts	EDAdmits	VolPsvHsp	InVolPsvHosp	TotPsvHosp	CSUAdmits	ED Admits/ Face Contacts	Vol Hspitzn/ Face Contacts	Invol Hspitzn/ Face Contacts	Total Hspitzn/ Face Contacts	CSU Admits/ Face Contacts
Aroostook	92	50	20	1	21	7	54%	22%	1%	23%	8%
Atlantic (WCPA)	89	52	19	5	24	4	58%	21%	6%	27%	4%
CHCS	108	58	15	2	17	26	54%	14%	2%	16%	24%
Crisis&Cnsing	292	164	52	7	59	61	56%	18%	2%	20%	21%
CSI	215	151	59	16	75	19	70%	27%	7%	35%	9%
Evergreen	45	25	9	1	10	4	56%	20%	2%	22%	9%
MCMH	99	71	45	2	47	9	72%	45%	2%	47%	9%
OCMH	60	41	17	3	20	14	68%	28%	5%	33%	23%
Sweetser	92	70	38	2	40	14	76%	41%	2%	43%	15%
TCMH	129	98	31	8	39	18	76%	24%	6%	30%	14%
YI	158	5	4	0	4	37	3%	3%	0%	3%	23%
TOTAL	1379	785	309	47	356	213	57%	22%	3%	26%	27%
Group Average											
1st Quartile	90.5	45.5	16	1.5	18.5	8	55%	19%	2%	21%	9%
Median	99	58	20	2	24	14	58%	22%	2%	27%	14%
3rd Quartile	143.5	84.5	41.5	6	43.5	22.5	71%	28%	5%	34%	22%
Created by R. Jerrold Melville, State of Maine DHHS OQI											

November 2009 Monthly Crisis Report Utilization Analysis *											
Agency *	FaceContacts	EDAdmits	VolPsyHsp	InVolPsyHosp	TotPsyHosp	CSUAdmits	ED Admits/ Face Contacts	Vol Hsptlztn/ Face Contacts	Invol Hsptlztn/ Face Contacts	Total Hsptlztn/ Face Contacts	CSU Admits/ Face Contacts
Aroostook	108	50	12	6	18	11	46%	11%	6%	17%	10%
Atlantic (WCPA)	55	33	14	0	14	1	60%	25%	0%	25%	2%
CHCS	111	63	10	3	13	28	57%	9%	3%	12%	25%
Crisis&Cnsing	310	164	54	18	72	59	53%	17%	6%	23%	19%
CSI	215	142	50	13	63	23	66%	23%	6%	29%	11%
Evergreen	43	24	6	2	8	5	56%	14%	5%	19%	12%
MCMH	109	83	41	7	48	5	76%	38%	6%	44%	5%
OCMH	58	33	169	1	17	12	57%	291%	2%	29%	21%
Sweetser	91	70	31	7	38	7	77%	34%	8%	42%	8%
TCMH	164	123	57	2	59	18	75%	35%	1%	36%	11%
YI	150	8	1	2	3	42	5%	1%	1%	2%	28%
TOTAL	1414	793	445	61	353	211	56%	31%	4%	25%	27%
Group Average											
1st Quartile	74.5	33	11	2	13.5	6	54%	13%	2%	18%	9%
Median	109	63	31	3	18	12	57%	23%	5%	25%	11%
3rd Quartile	157	103	52	7	53.5	25.5	71%	34%	6%	33%	20%
Created by R. Jerrold Melville, State of Maine DHHS OQI											

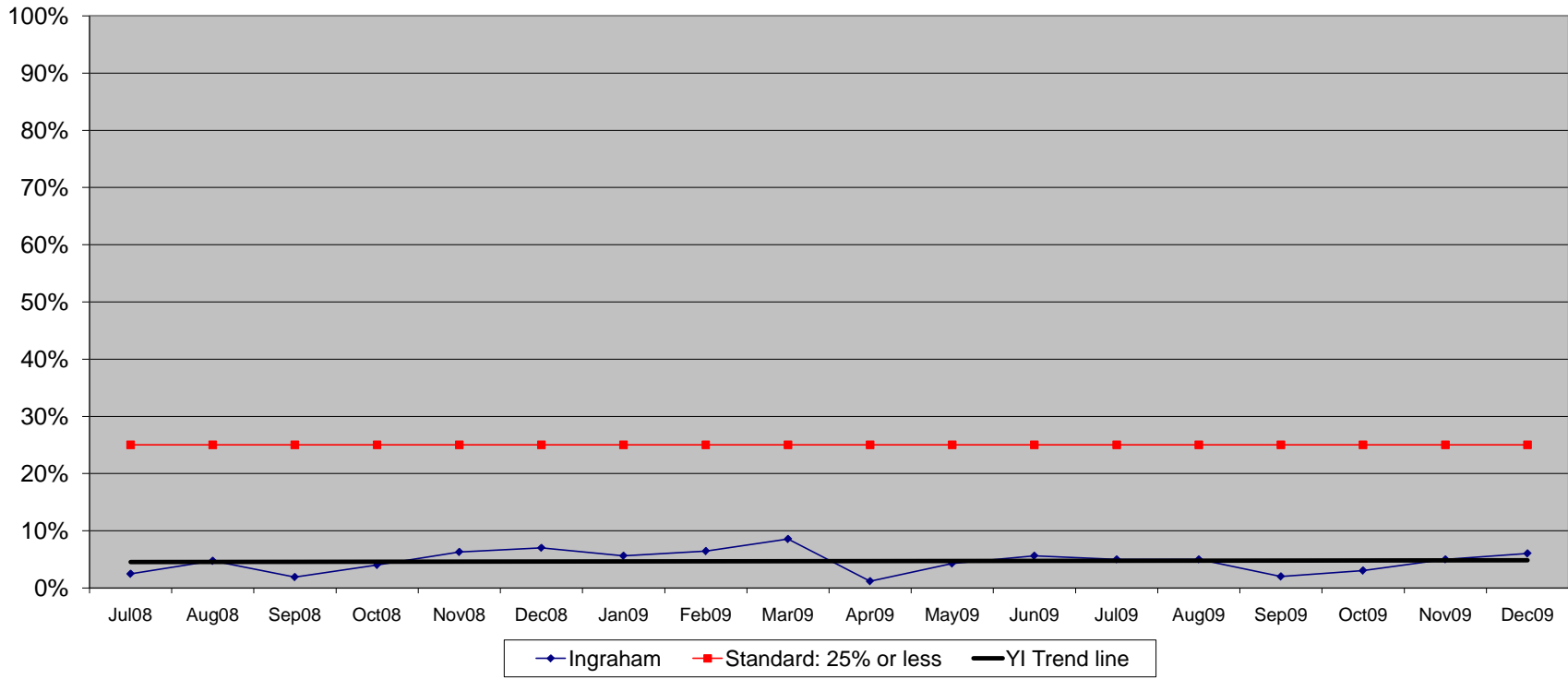
December 2009 Monthly Crisis Report Utilization Analysis *											
Agency *	FaceContacts	EDAdmits	VolPsvHsp	InVolPsvHosp	TotPsvHosp	CSUAdmits	ED Admits/ Face Contacts	Vol Hsptlzn/ Face Contacts	Invol Hsptlzn/ Face Contacts	Total Hsptlzn/ Face Contacts	CSU Admits/ Face Contacts
Aroostook	81	42	10	5	15	5	52%	12%	6%	19%	6%
Atlantic (WCPA)	77	48	13	5	18	3	62%	17%	6%	23%	4%
CHCS	104	57	13	0	13	24	55%	13%	0%	13%	23%
Crisis&Cnsng	285	154	60	6	66	46	54%	21%	2%	23%	16%
CSI	219	163	60	15	75	32	74%	27%	7%	34%	15%
Evergreen	36	15	6	1	7	1	42%	17%	3%	19%	3%
MCMH	124	105	57	9	66	5	85%	46%	7%	53%	4%
OCMH	64	38	12	3	15	15	59%	19%	5%	23%	23%
Sweetser	87	70	26	10	36	14	80%	30%	11%	41%	16%
TCMH	135	93	37	8	45	22	69%	27%	6%	33%	16%
YI	145	9	3	0	3	35	6%	2%	0%	2%	24%
TOTAL	1357	794	297	62	359	202	59%	22%	5%	26%	25%
Group Average											
1st Quartile	79	40	11	2	14	5	53%	15%	2%	19%	5%
Median	104	57	13	5	18	15	59%	19%	6%	23%	16%
3rd Quartile	140	99	47	8.5	55.5	28	72%	27%	7%	34%	20%

Created by R. Jerrold Melville, State of Maine DHHS OQI

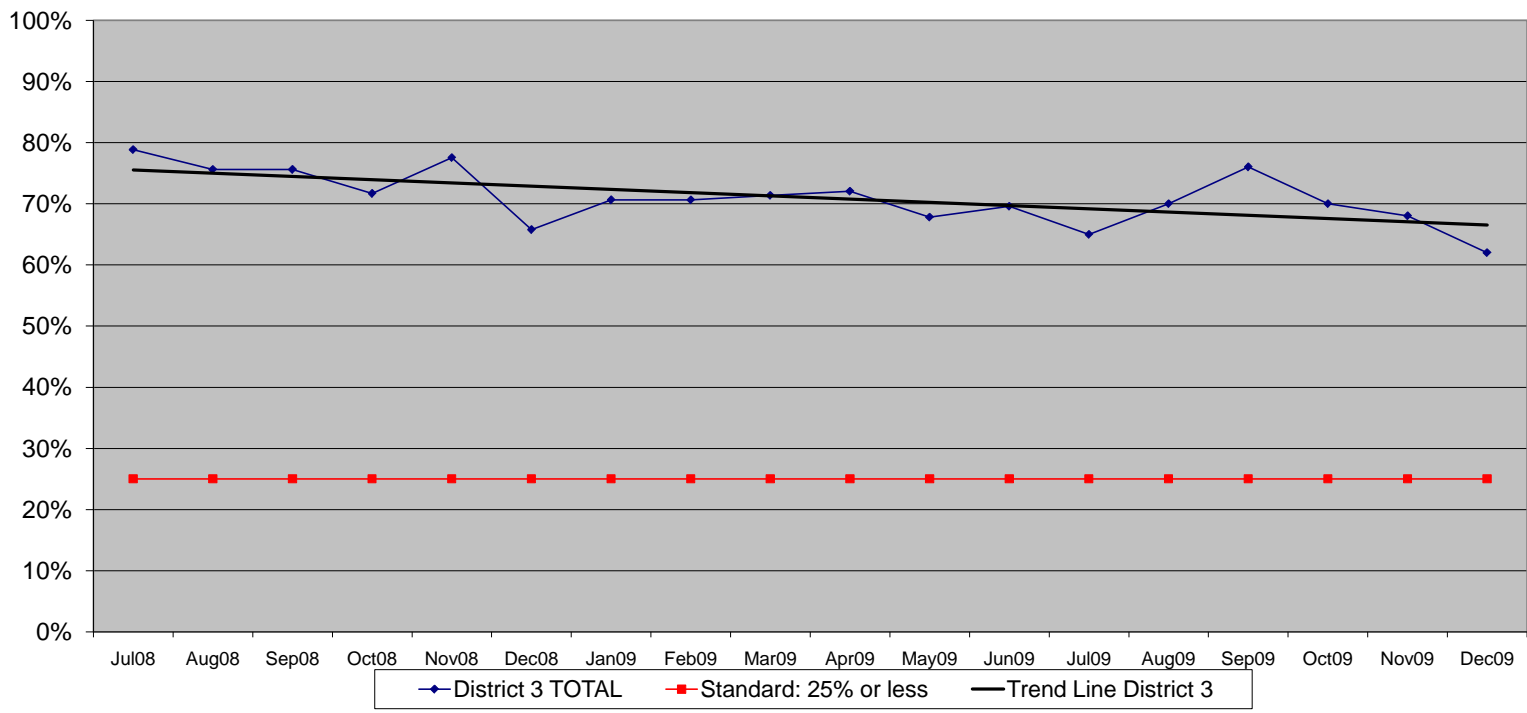
District 1: CSI
SFY2009-SFY2010 Q1Q2 OAMH Monthly Crisis Reports
Percentage of Face to Face Contacts Seen in Emergency Department



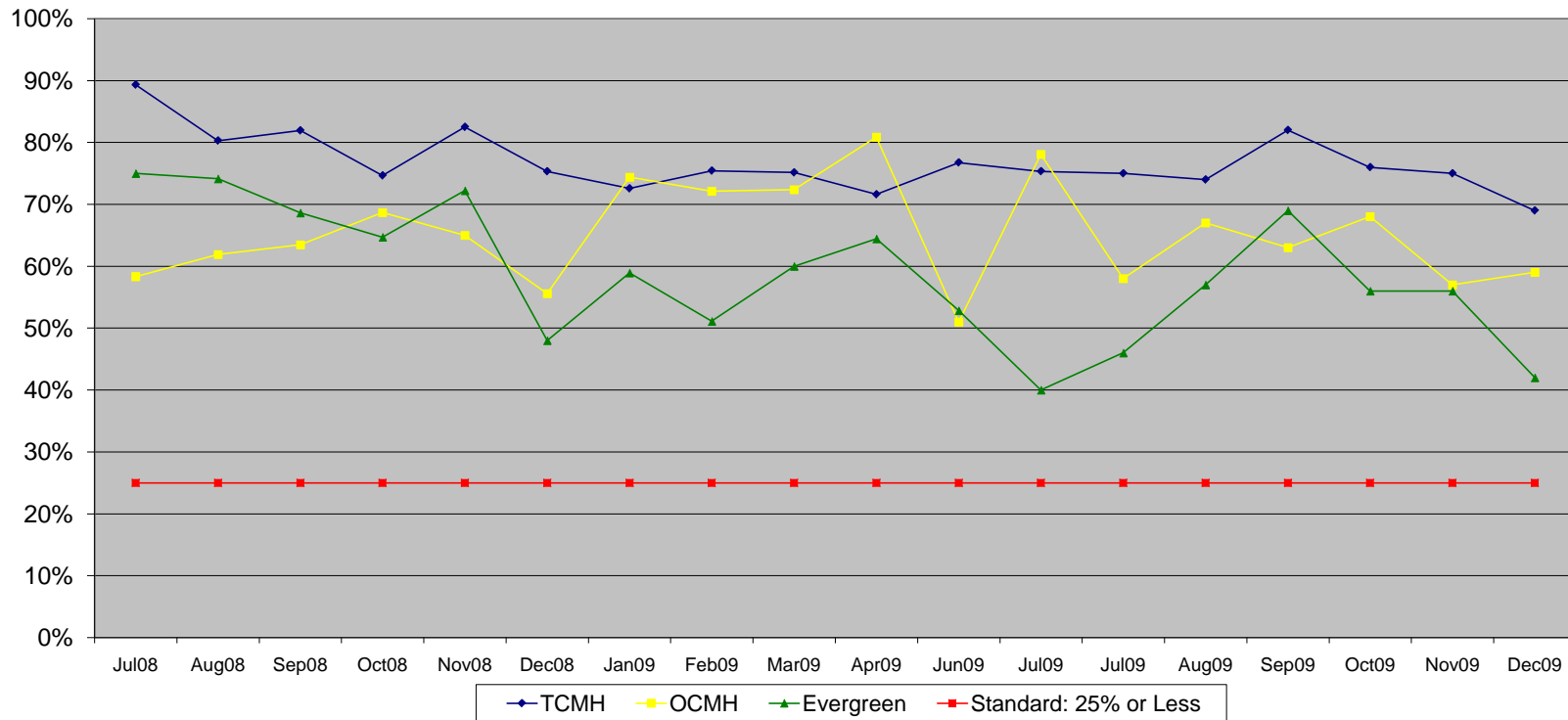
District 2: YA Ingraham
SFY2009-SFY2010 Q1Q2 OAMH Monthly Crisis Reports
Percentage of Face to Face Contacts Seen in Emergency Department



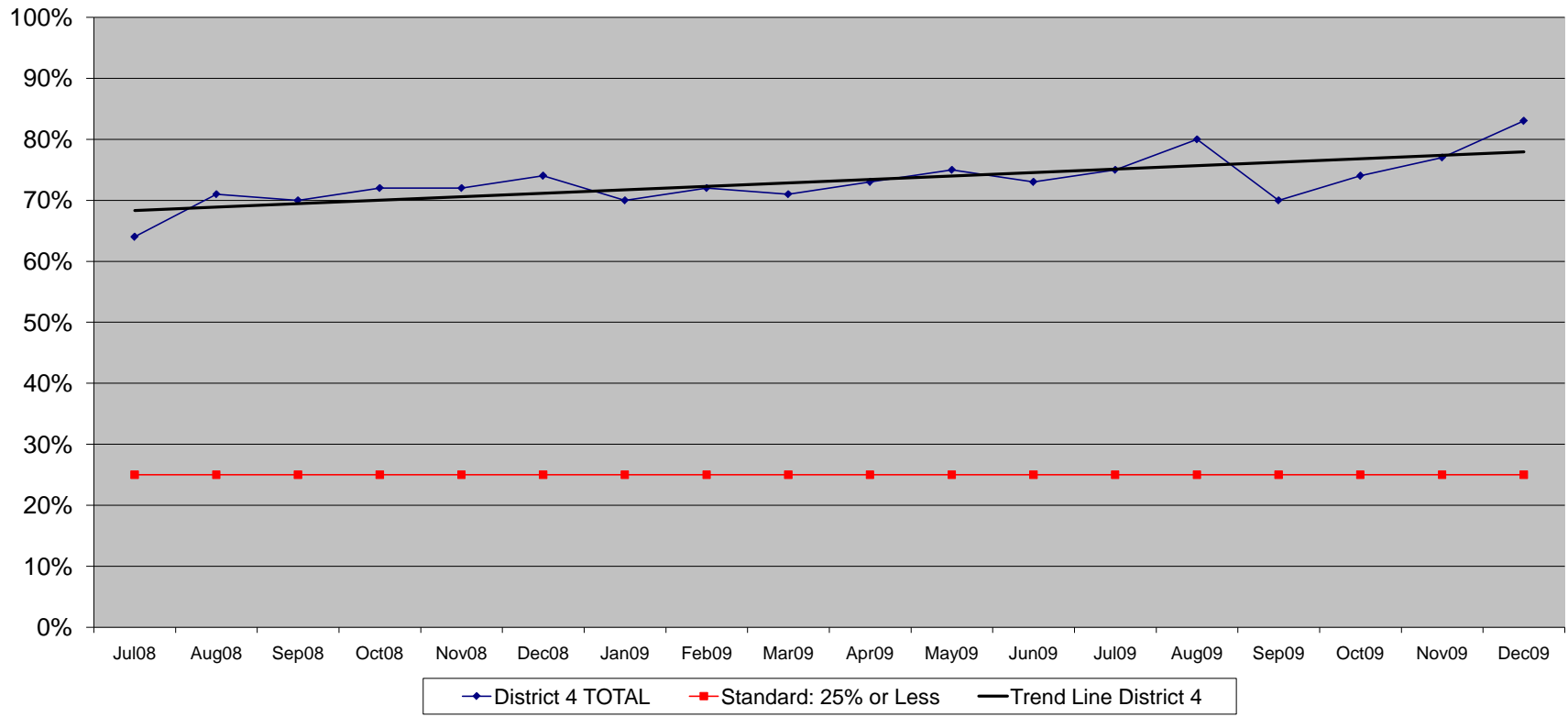
District 3 : TCMH, OCMH, Evergreen
SFY 2009-SFY2010 Q1Q2 OAMH Monthly Crisis Reports
Average Percentage of Face to Face Contacts Seen in Emergency Department



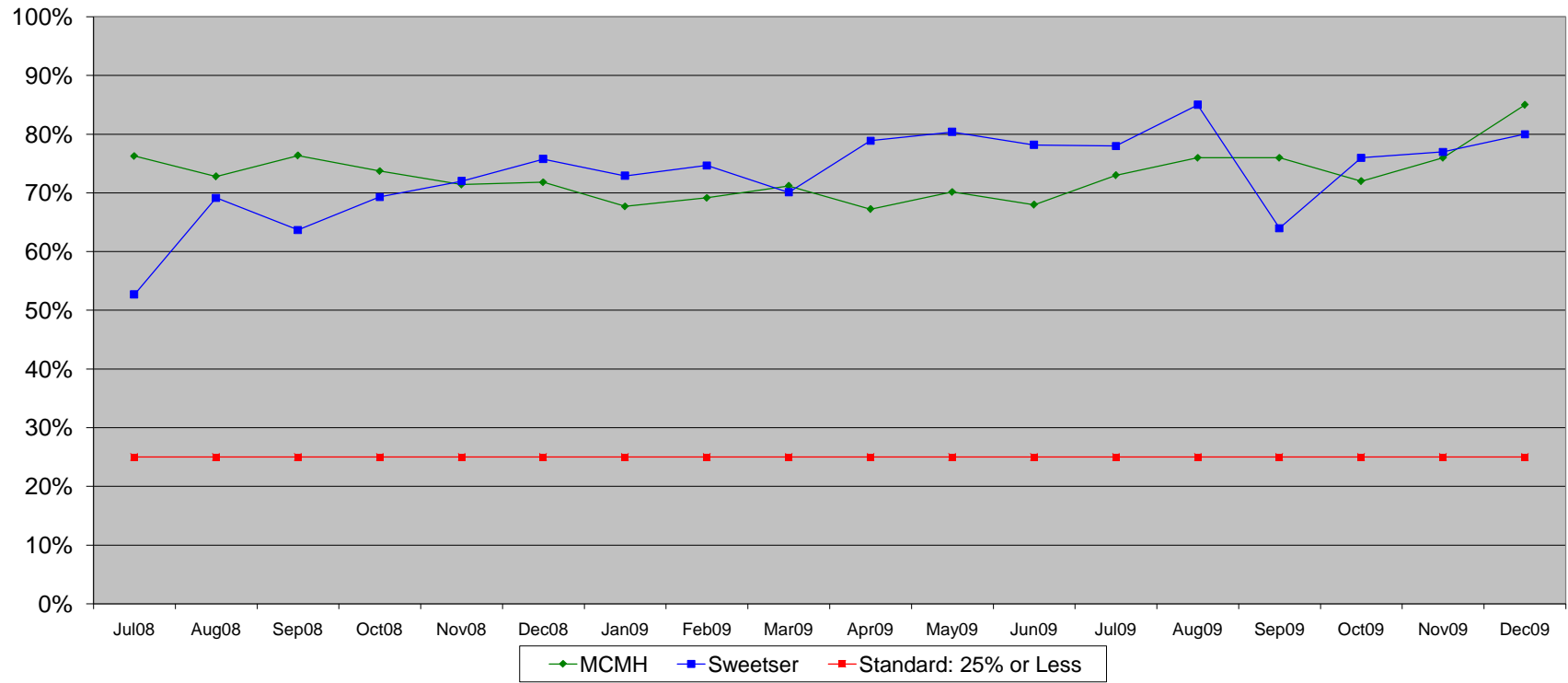
**District 3: TCMH, OCMH, Evergreen
 SFY 2009-SFY2010 Q1Q2 OAMH Monthly Crisis Reports
 Aggregated Percentages of Face to Face Contacts Seen in Emergency Department**



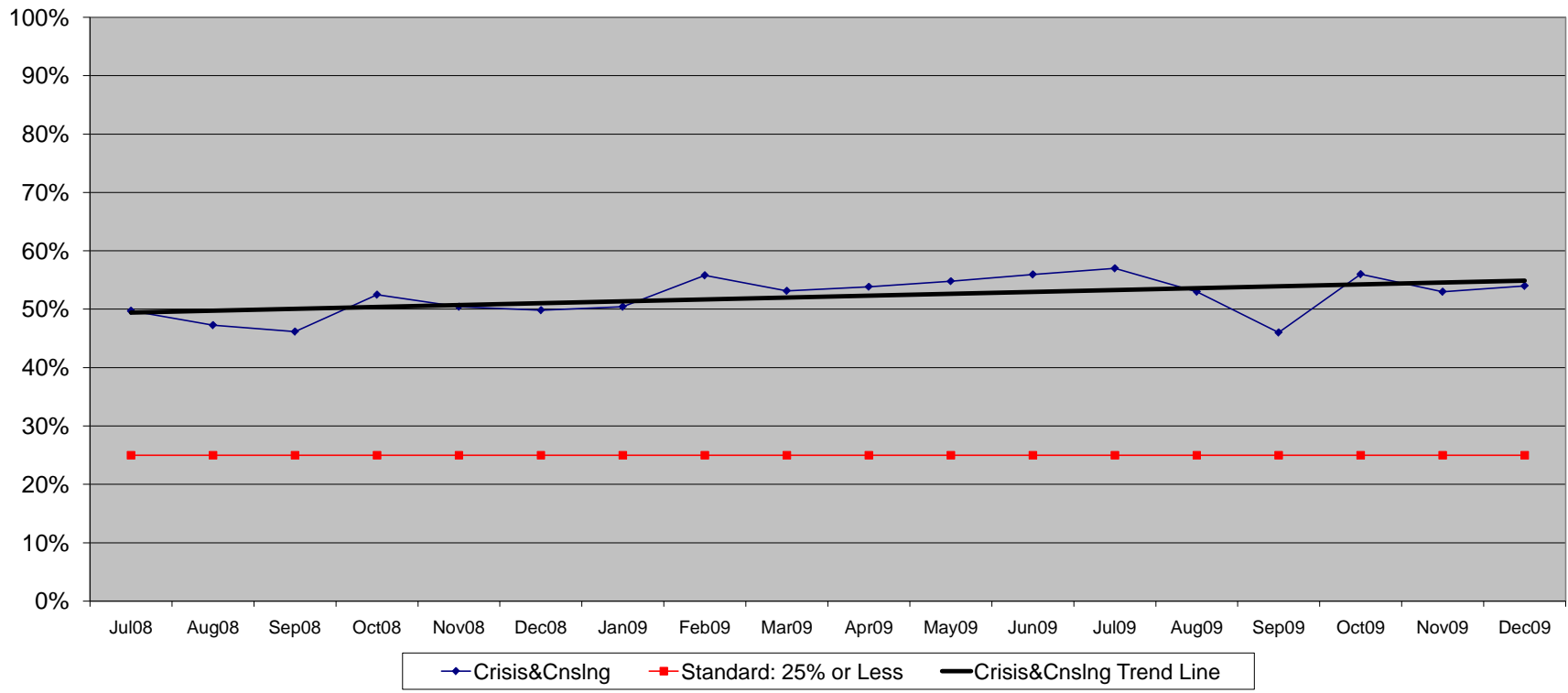
District 4: MCMH, Sweetser
SFY 2009-SFY2010 Q1Q2 OAMH Monthly Crisis Reports
Average Percentage of Face to Face Contacts Seen in Emergency Department



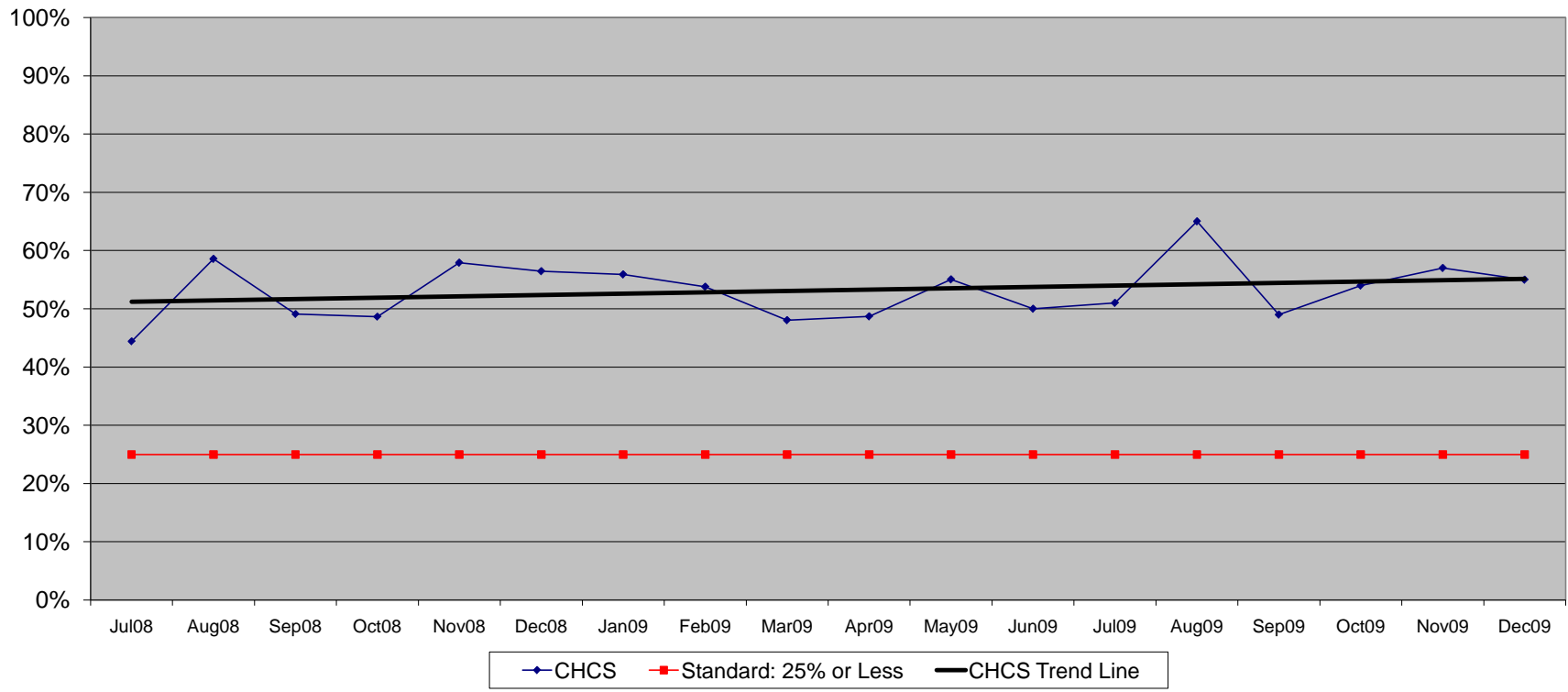
District 4: MCMH, Sweetser
SFY 2009-SFY 2010 Q1Q2 OAMH Monthly Crisis Reports
Aggregated Percentages of Face to Face Contacts Seen in Emergency Department



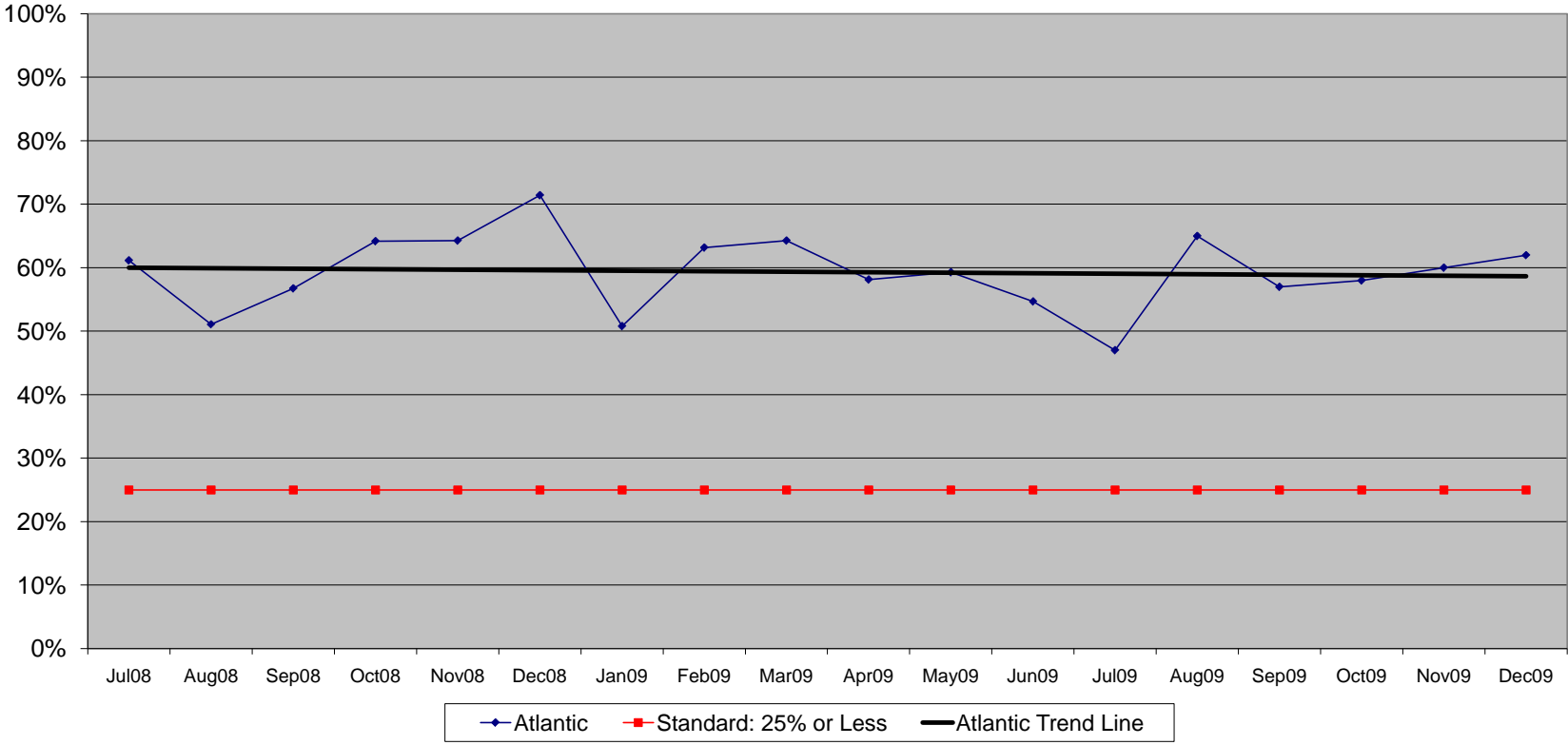
District 5: Crisis&Counseling
SFY2009-SFY2010 Q1Q2 OAMH Monthly Crisis Reports
Percentage of Face to Face Contacts Seen in Emergency Department



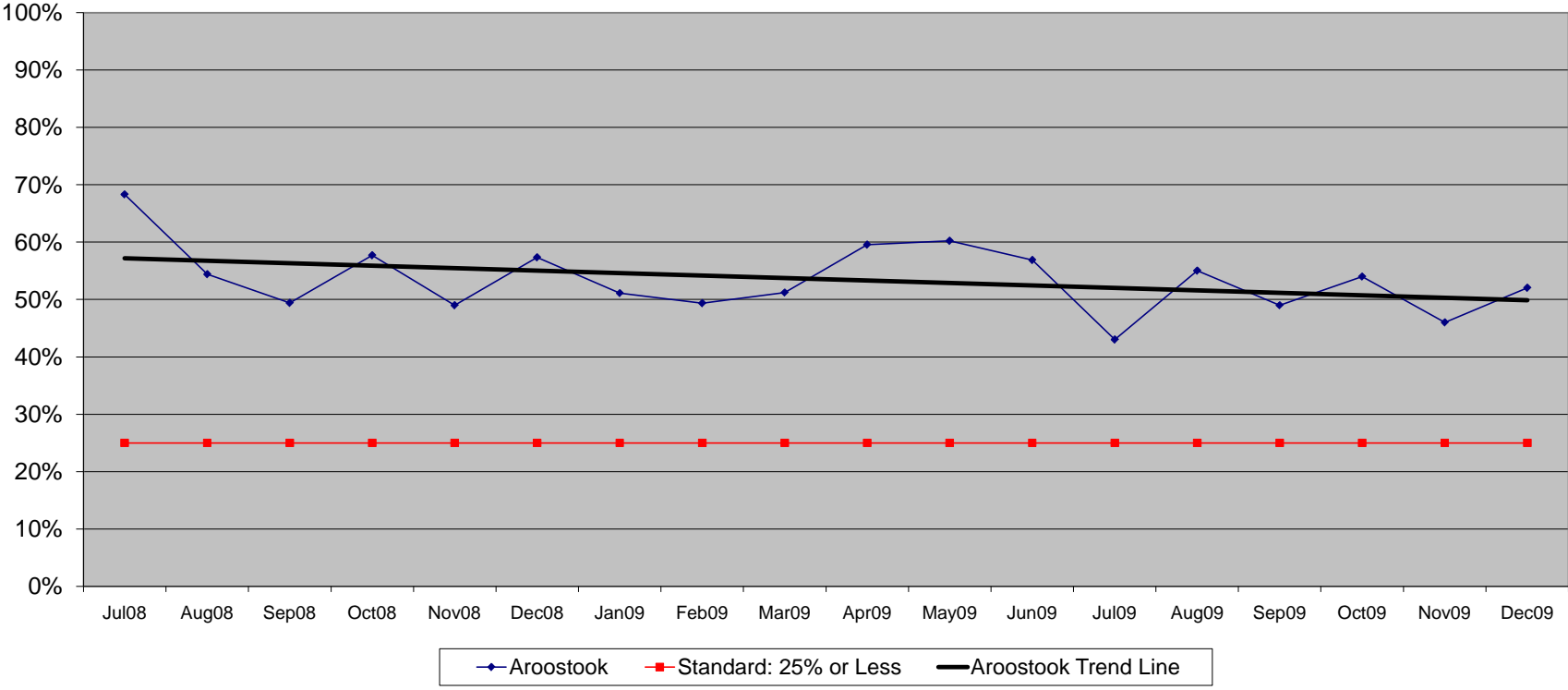
District 6: CHCS
SFY2009-SFY2010 Q1Q2 OAMH Monthly Crisis Reports
Percentage of Face to Face Contacts Seen in Emergency Department



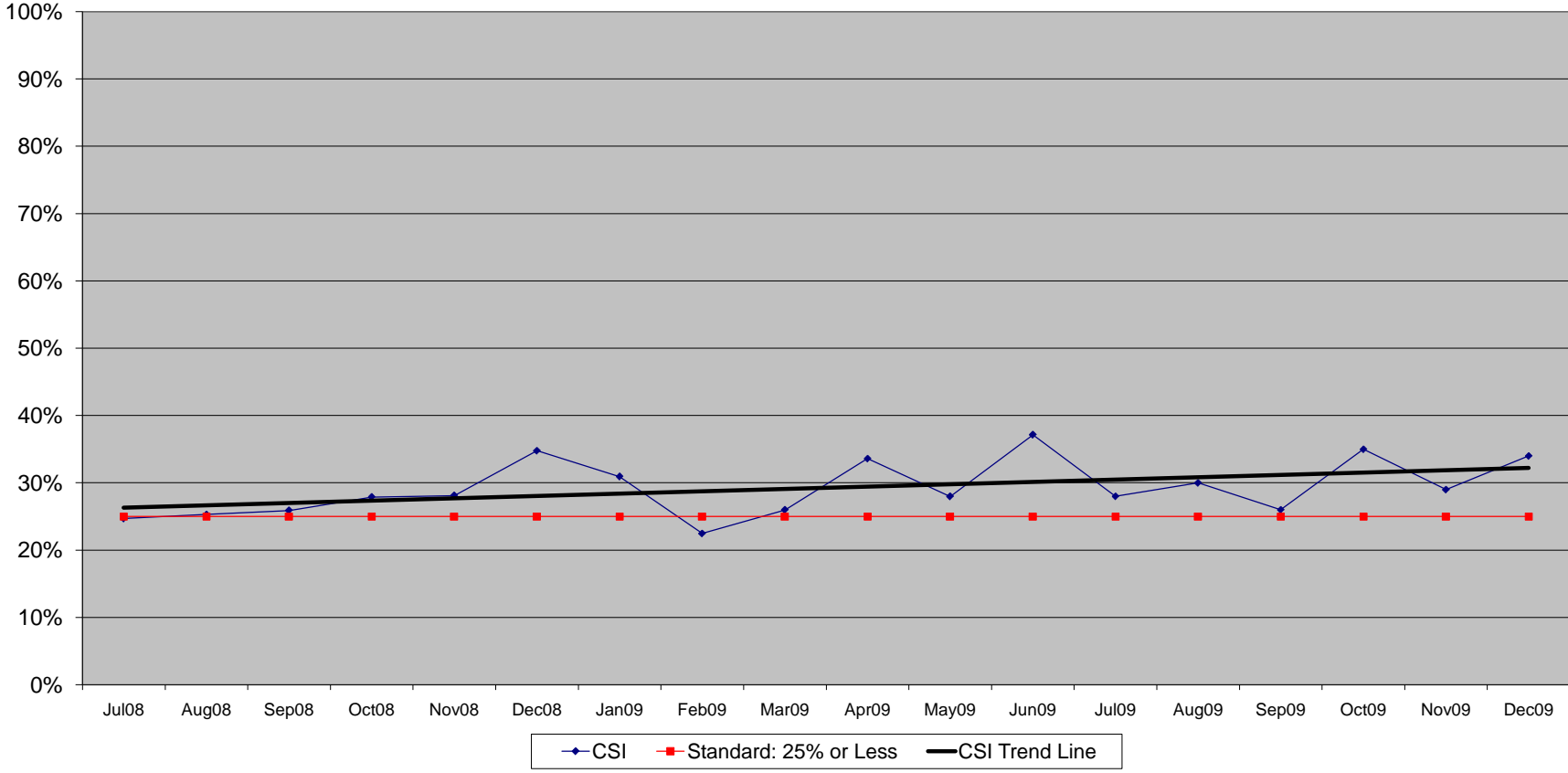
District 7: Atlantic
SFY2009-SFY2010 Q1Q2 OAMH Monthly Crisis Reports
Percentage of Face to Face Contacts Seen in Emergency Department



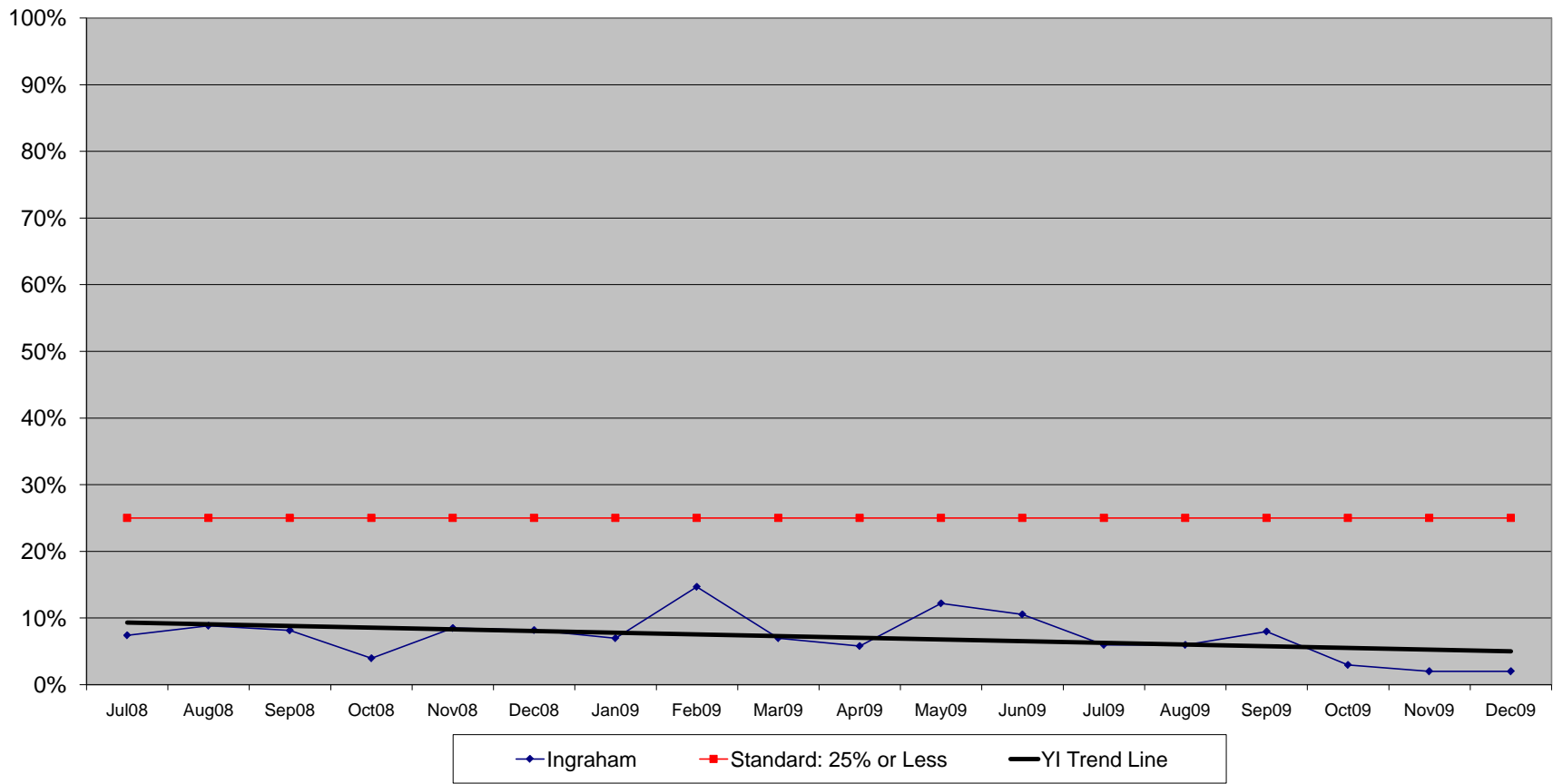
District 8: Aroostook
SFY2009-SFY2010 Q1Q2 OAMH Monthly Crisis Reports
Percentage of Face to Face Contacts Seen in Emergency Department



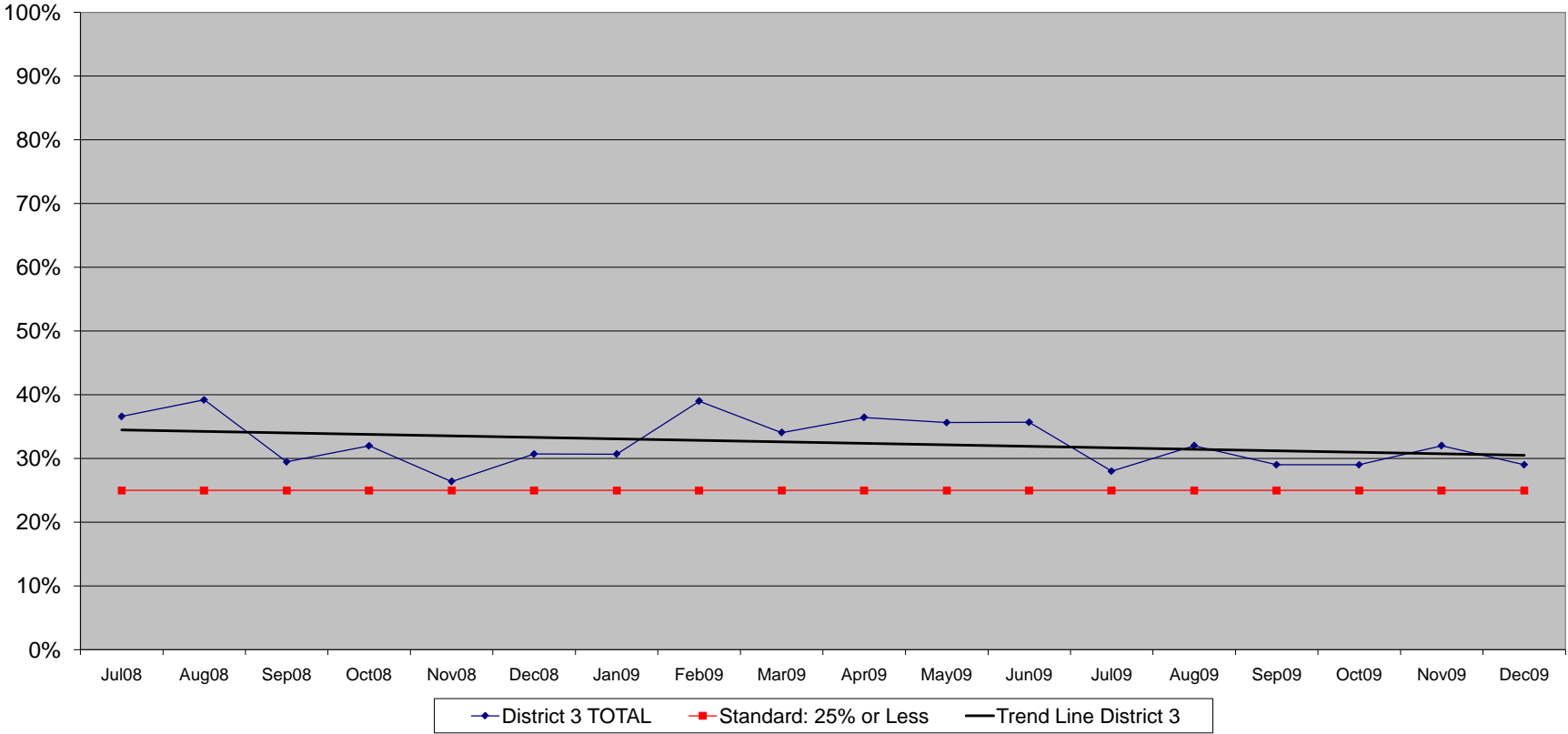
District 1: CSI
SFY 2009-SFY 2010 Q1Q2 OAMH Monthly Crisis Reports
Percentage of Face to Face Contacts Hospitalized Inpatient Psychiatric



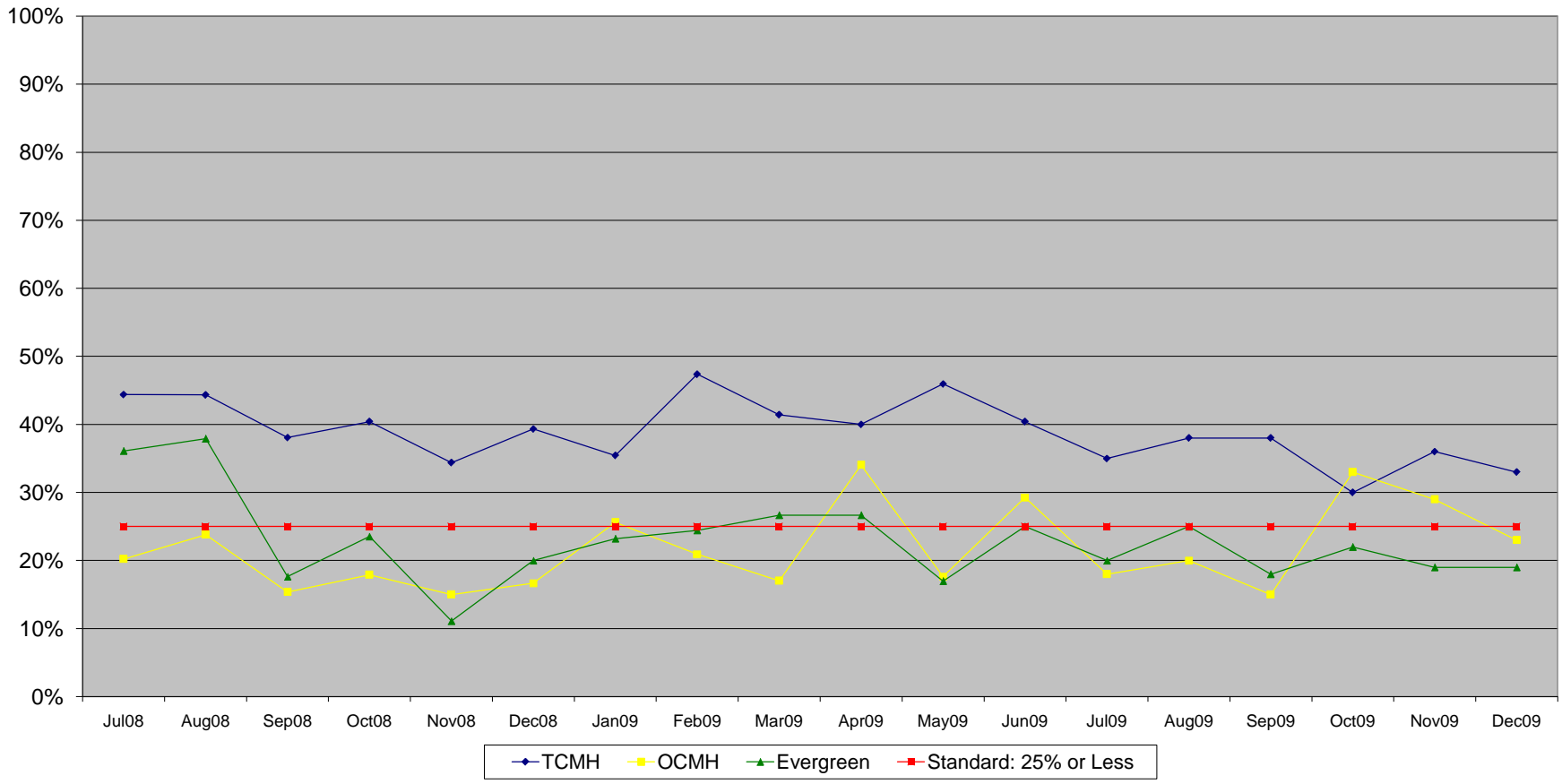
District 2: YA Ingraham
SFY 2009 - SFY 2010 Q1Q2 OAMH Monthly Crisis Reports
Percentage of Face to Face Contacts Hospitalized Inpatient Psychiatric



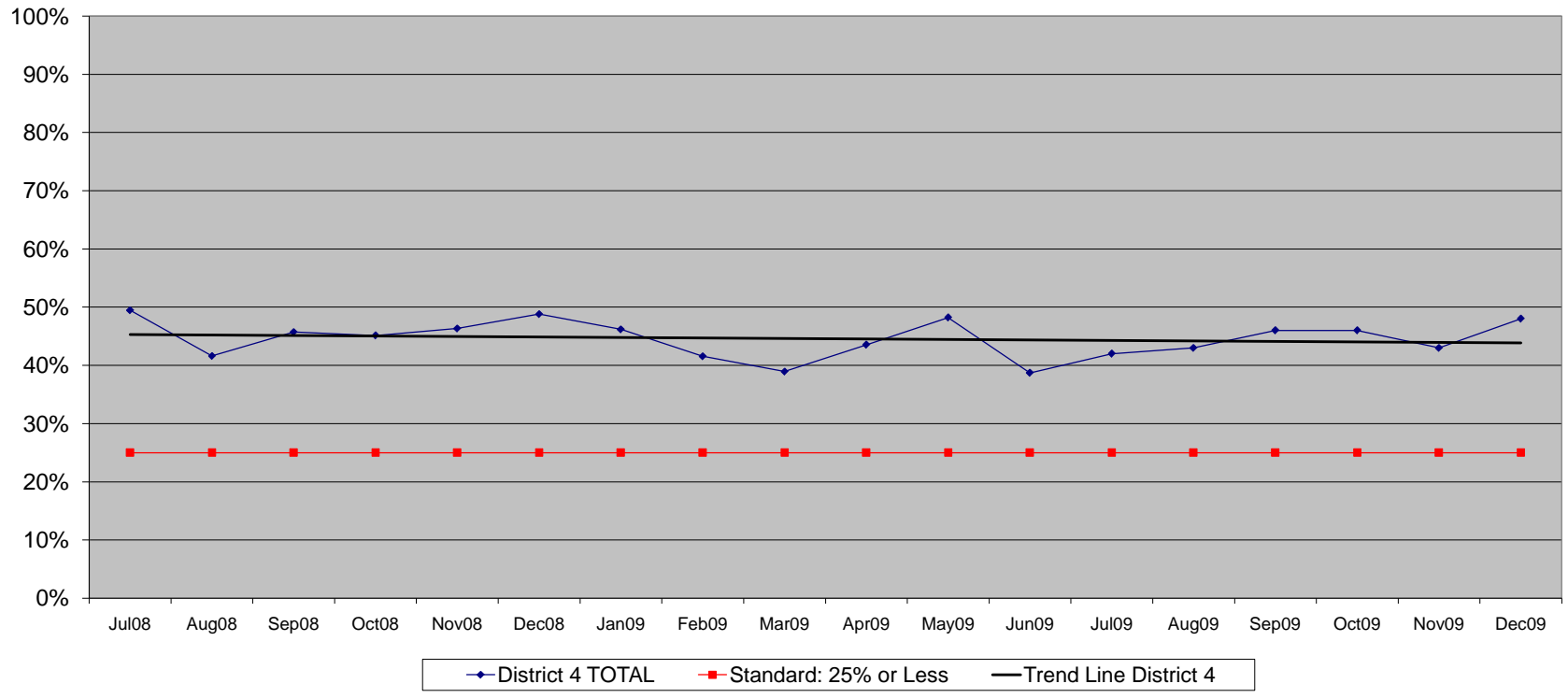
District 3: TCMH, OCMH, Evergreen
SFY 2009 - SFY 2010 Q1Q2 OAMH Monthly Crisis Reports
Average Percentage of Face to Face Contacts Hospitalized Inpatient Psychiatric



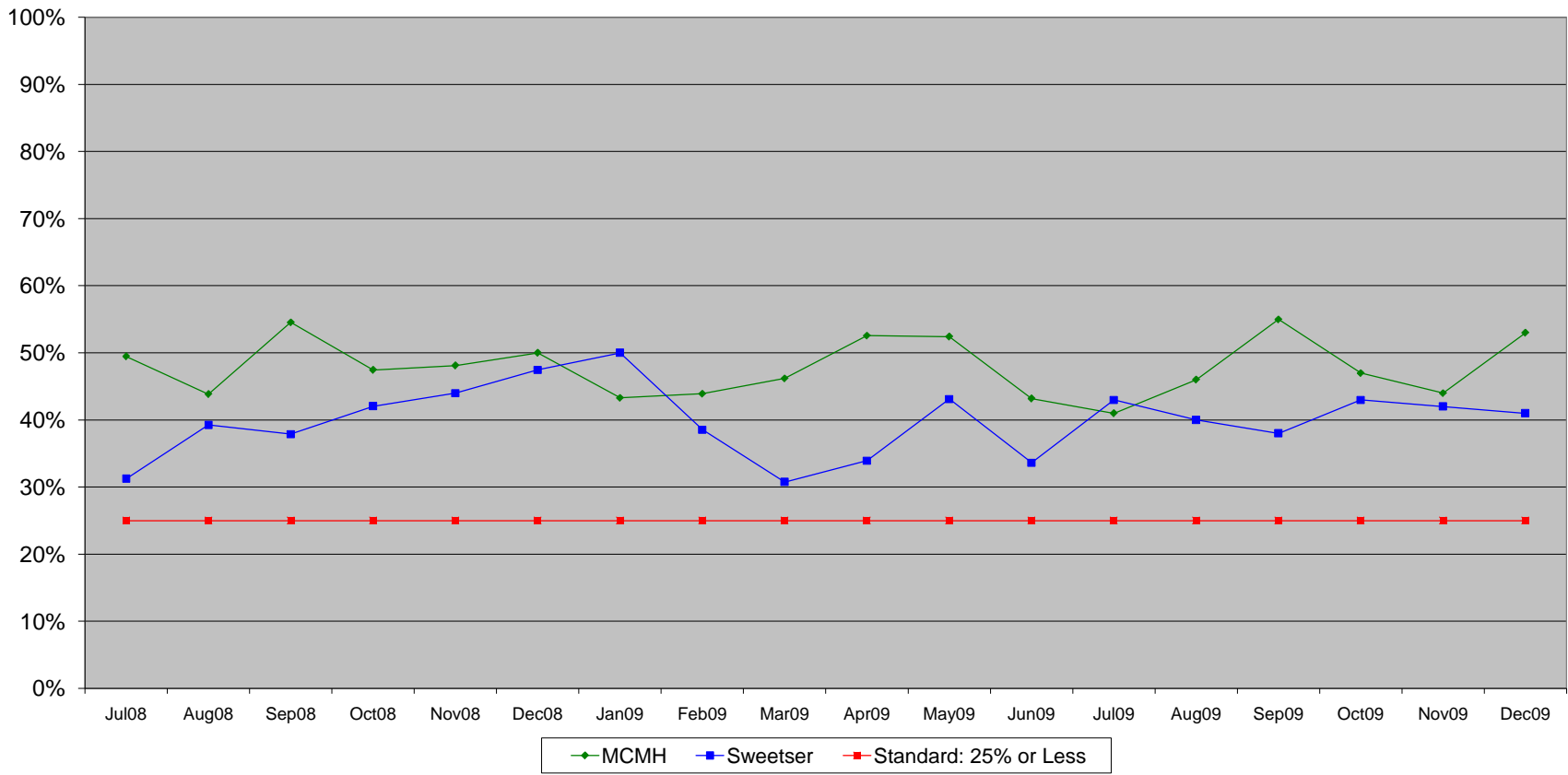
**District 3: TCMH, OCMH, Evergreen
 SFY 2009 - SFY 2010 Q1Q2 OAMH Monthly Crisis Reports
 Aggregated Percentages of Face to Face Contacts Hospitalized Inpatient Psychiatric**



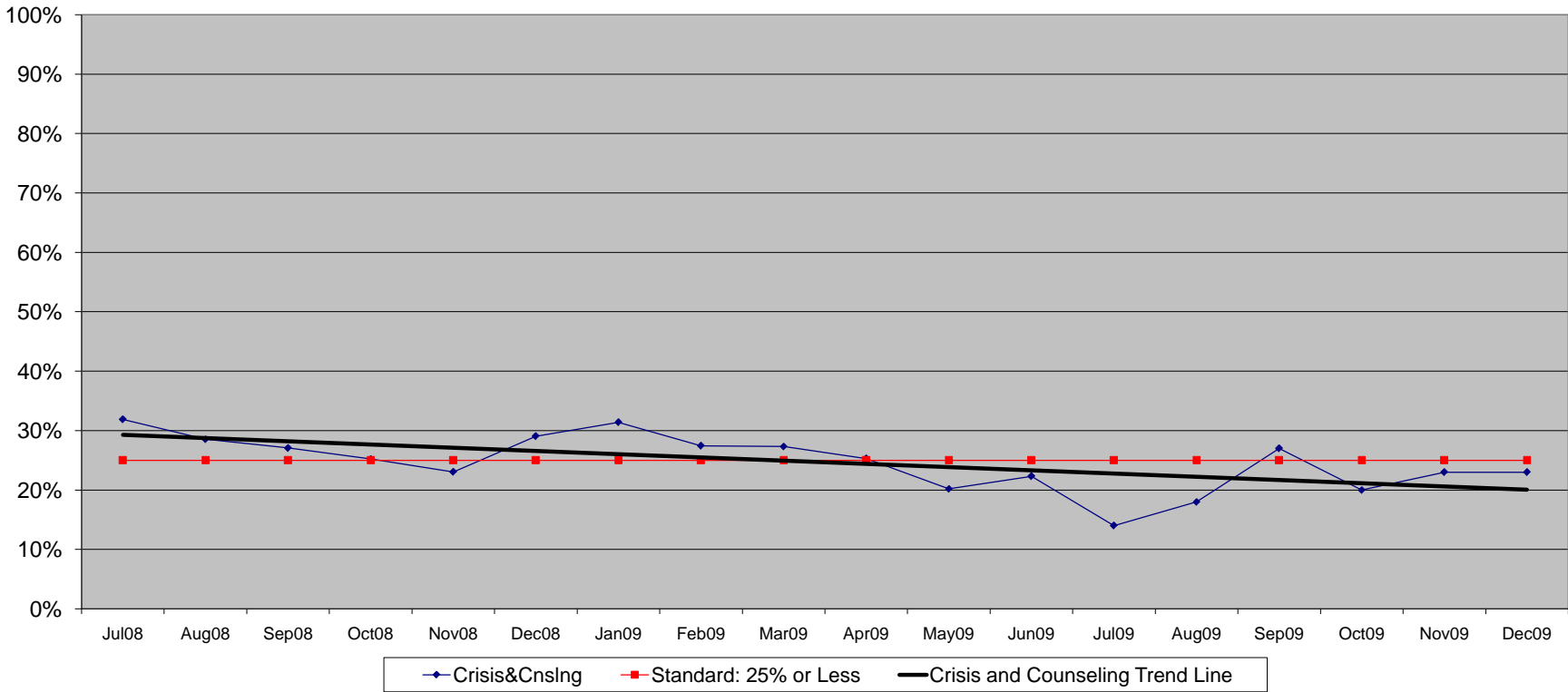
District 4: MCMH, Sweetser
SFY 2009 SFY2010 Q1Q2 OAMH Monthly Crisis Reports
Average Percentage of Face to Face Contacts Hospitalized Inpatient Psychiatric



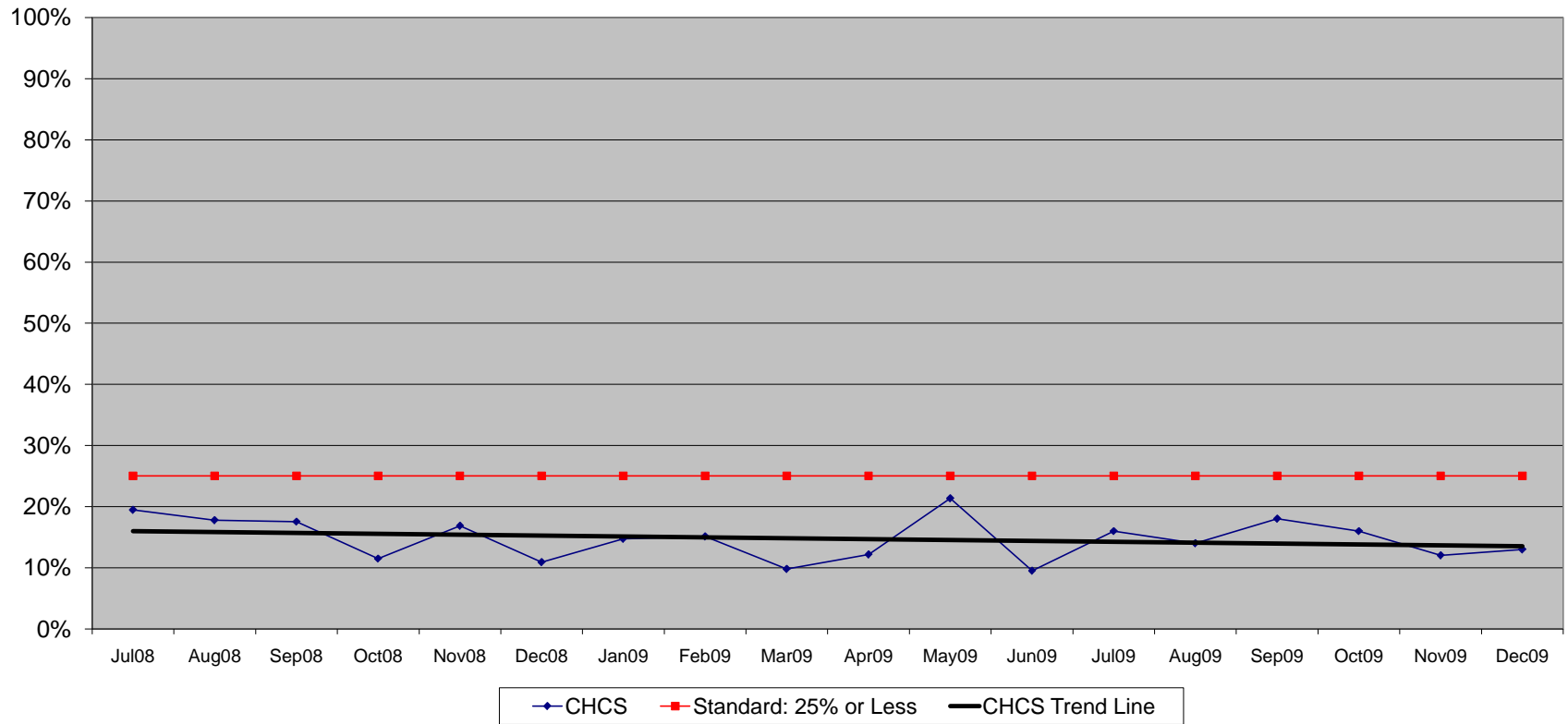
District 4: MCMH, Sweetser
SFY 2009 SFY2010 Q1Q2 OAMH Monthly Crisis Reports
Aggregated Percentages of Face to Face Contacts Hospitalized Inpatient Psychiatric



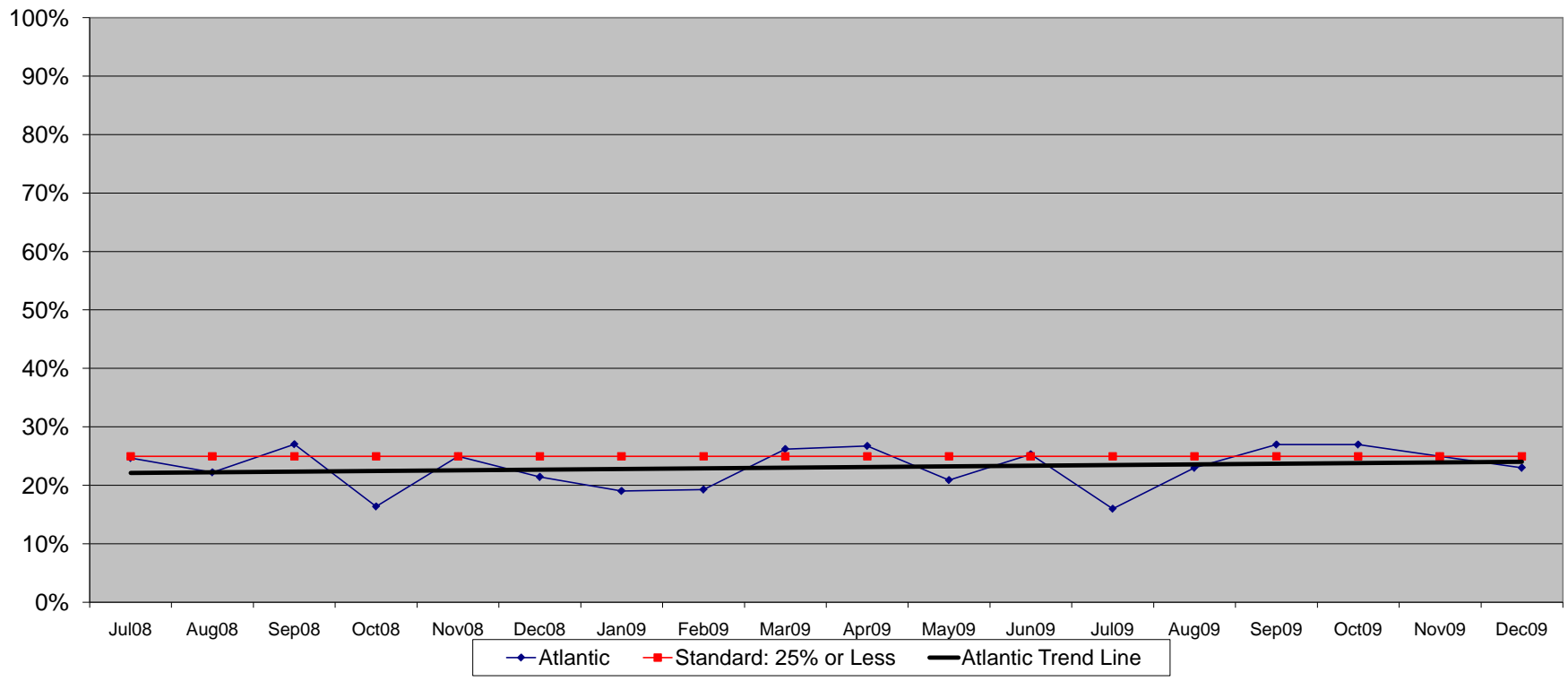
District 5: Crisis&Counselng
SFY 2009 SFY 2010 Q1Q2 Monthly Crisis Report
Percentage of Face to Face Contacts Hospitalized Inpatient Psychiatric



District 6: CHCS
SFY2009 SFY2010 Q1Q2 OAMH Monthly Crisis Reports
Percentage of Face to Face Contacts Hospitalized Inpatient Psychiatric



District 7: Atlantic
SFY 2009 SFY 2010 Q1Q2 OAMH Monthly Crisis Reports
Percentage of Face to Face Contacts Hospitalized Inpatient Psychiatric



District 8: Aroostook
SFY2009 SFY 2101 Q1Q2 OAMH Monthly Crisis Reports
Percentage of Face to Face Contacts Hospitalized Inpatient Psychiatric

